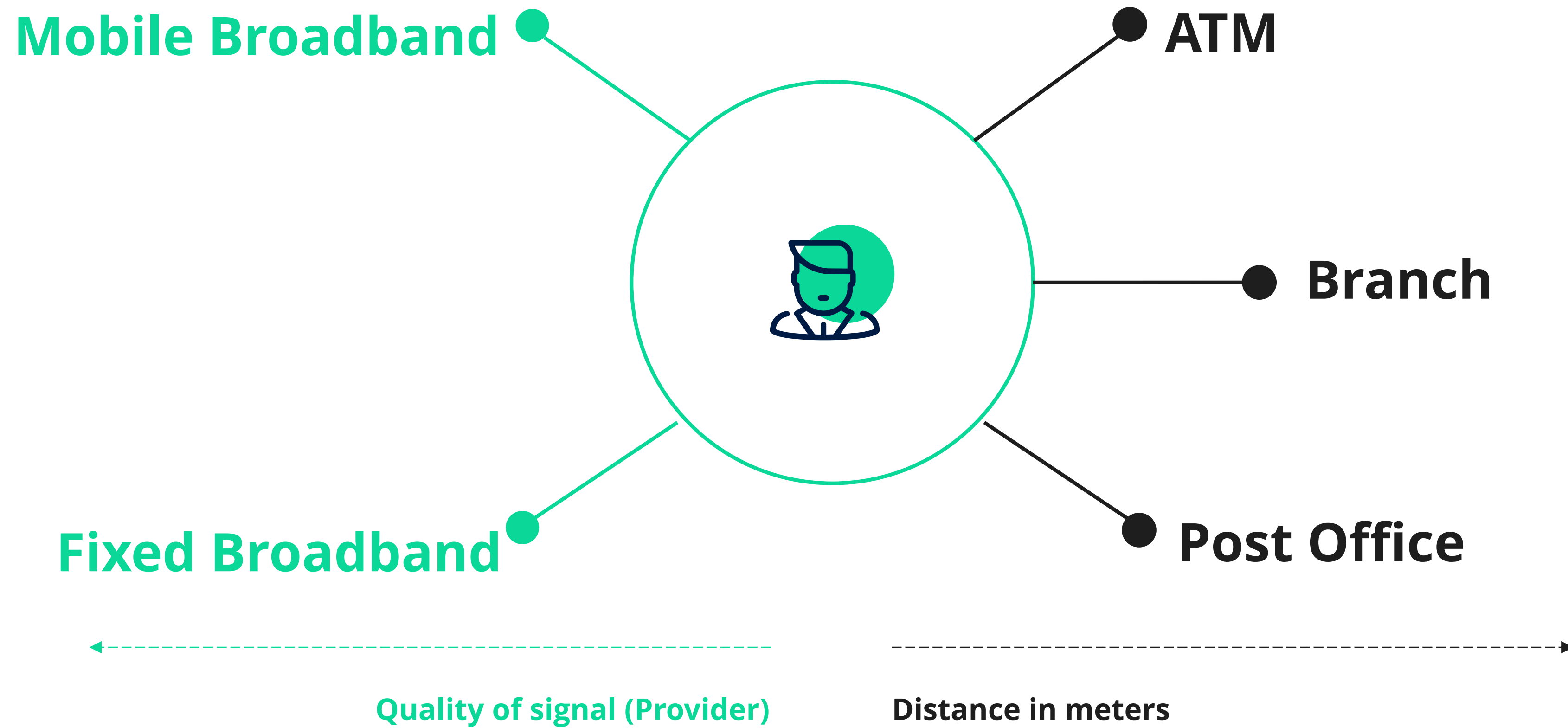


Knowing **who** your customers are **where** they are and **how** they do banking

Andra Sonea - Expert and Advisor, Banking Industry

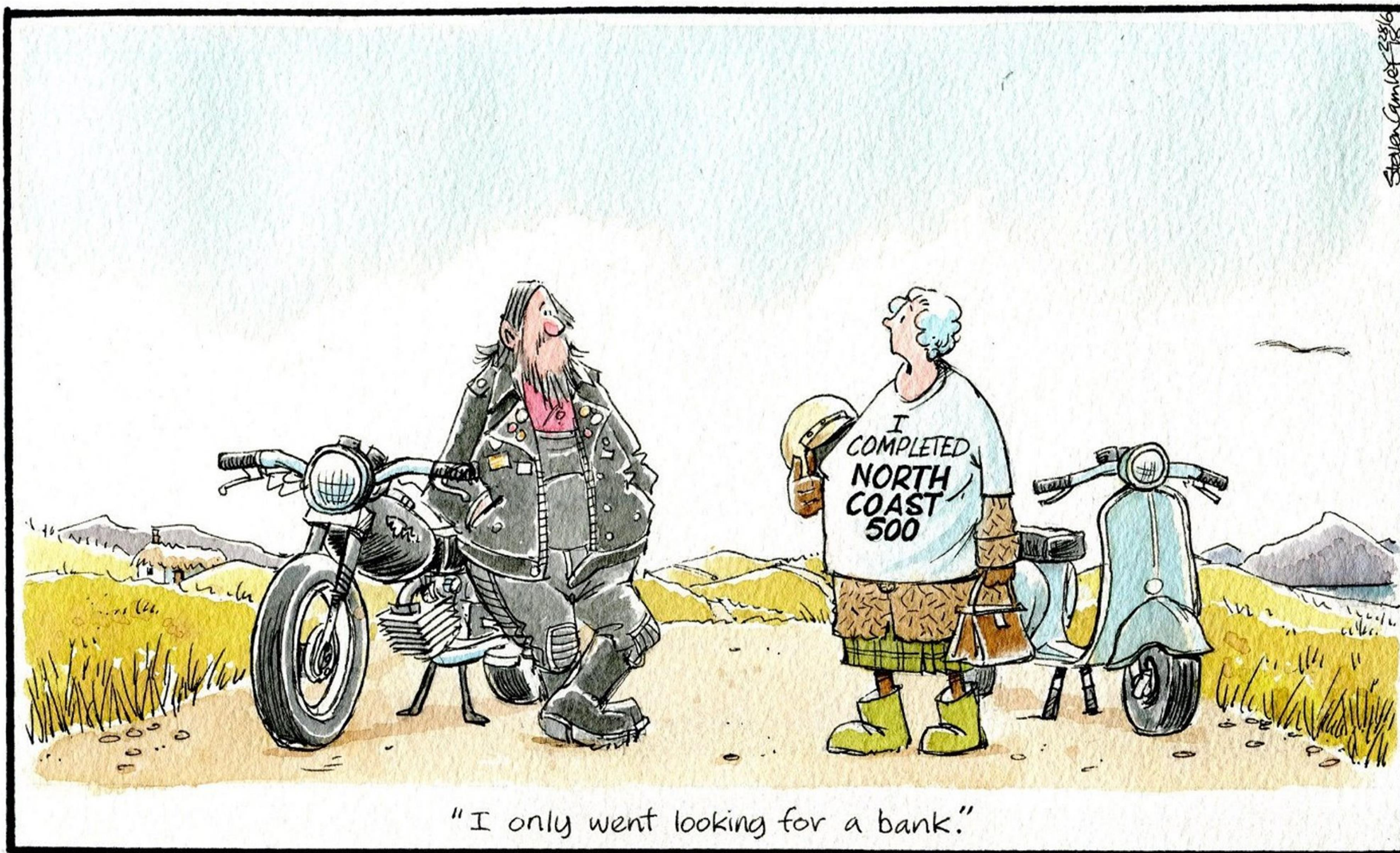
FintechOS Leap



“The Void”

Consumers can **get ‘stuck’ or be ‘blocked’**
from accessing financial products and services
because of **physical ability or capability issues**.

(Rowe et al., 2016)





Jenny Gilruth ✓
@JennyGilruth



.@RBS said the Leven branch had to close due to 'footfall'. Here's the mobile van in Leven today - note the queue and the step - making it inaccessible for wheelchair users 🙄



Lloyds Bank ✓ @LloydsBank · Nov 16, 2018
Replying to @TinaPhillips77



Hi, I'm LP. I'm sorry to read your tweet. Can you explain what issues you're having with the mobile branch?



Tina Phillips 🙏❤️🙏
@TinaPhillips77

Where to start 🙄🙄 paying for business banking & you close all local branches to Faringdon. I have to factor in 30/45 mins each week for mobile branch. IF it turns up & IF it doesn't leave early. Who will pay for my missed work time while I wait [#missedearnings](#)



Rosa Alba Macdonald
@rosa_alba_macd



[@RBS_Help](#) when is the wee van in Stonehaven ?



Vicks Chapman
@VicksChapman



What a bunch of thieving, uncaring, heartless bunch of bankers [@NatWest_Help](#) are!!! Help nothing! Nearly £100 if charges taken out, local branch shut, nearest one over 30 min drive from me and the mobile unit takes 24 hours for any payment to clear! Helpful!



Uckfield News
@UckfieldNews



Pub base is a success for outreach Post Office in Isfield
#Uckfield: uckfieldnews.com/pub-base-is-a-...



ST. ANNS CHAPEL
The Rifle Volunteer
MONDAY: 2-5
WEDNESDAY: 11-2
THURSDAY: 11-3
FRIDAY: 1-5

CALSTOCK
The Village Hall

TUESDAY: 1-5
THURSDAY: 9-1

Any enquiries to
Steve & Mary at Gunnislake Post Office
01822 832297

Questions

- Can I find the **Void areas**?
Is there a pattern for these areas?

Questions

- Can I find the Void areas? Is there a pattern for these areas?
- **Where** in the world are my clients and ...
potential clients?

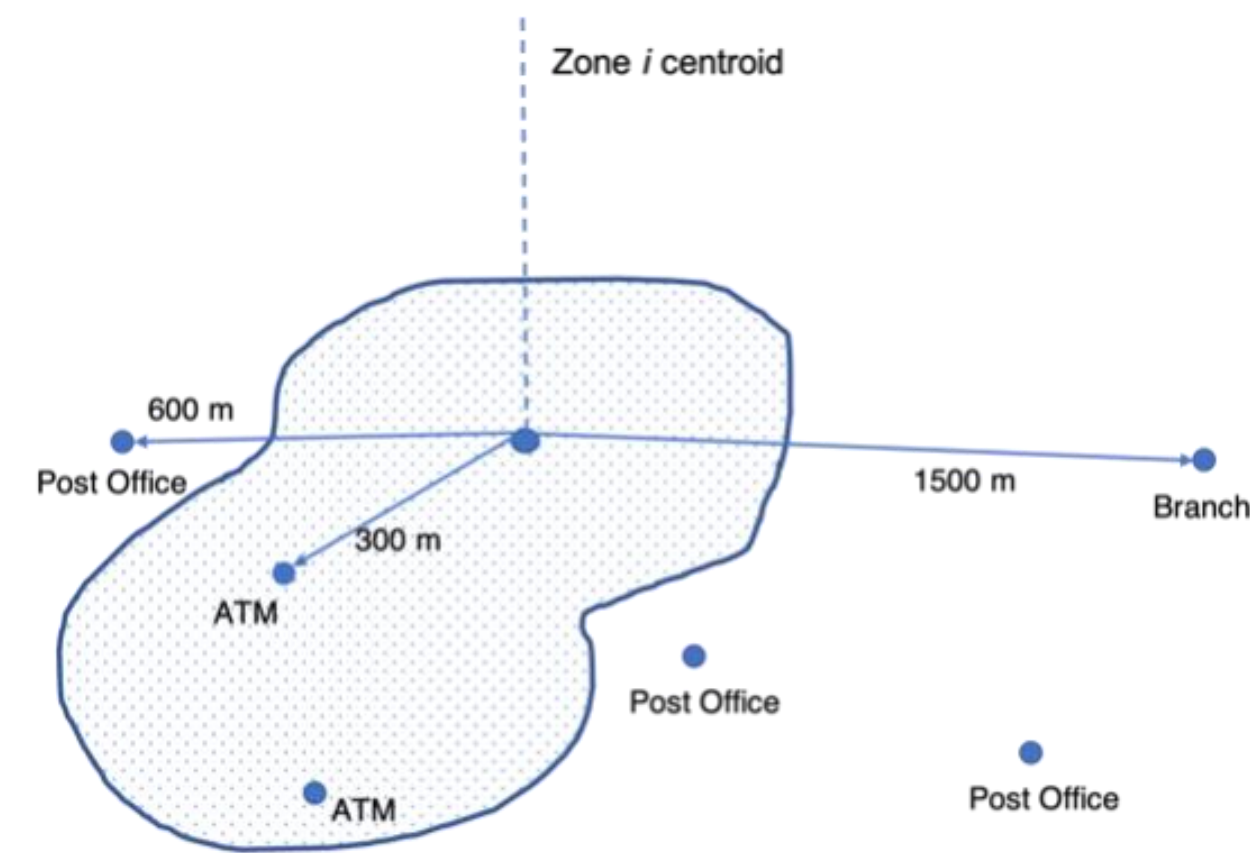
Questions

- Can I find the Void areas? Is there a pattern for these areas?
- Where in the world are my clients and ... potential clients?
- Can I better define my **channels strategy** so I can serve my clients depending on where they are and what they have access to?

Questions

- Can I find the Void areas? Is there a pattern for these areas?
- Where in the world are my clients and ... potential clients?
- Can I better define my channels strategy so I can serve my clients depending on where they are and what they have access to?
- Can I do a better **customer segmentation** depending on the context of customers place of residence?

Measuring “access”

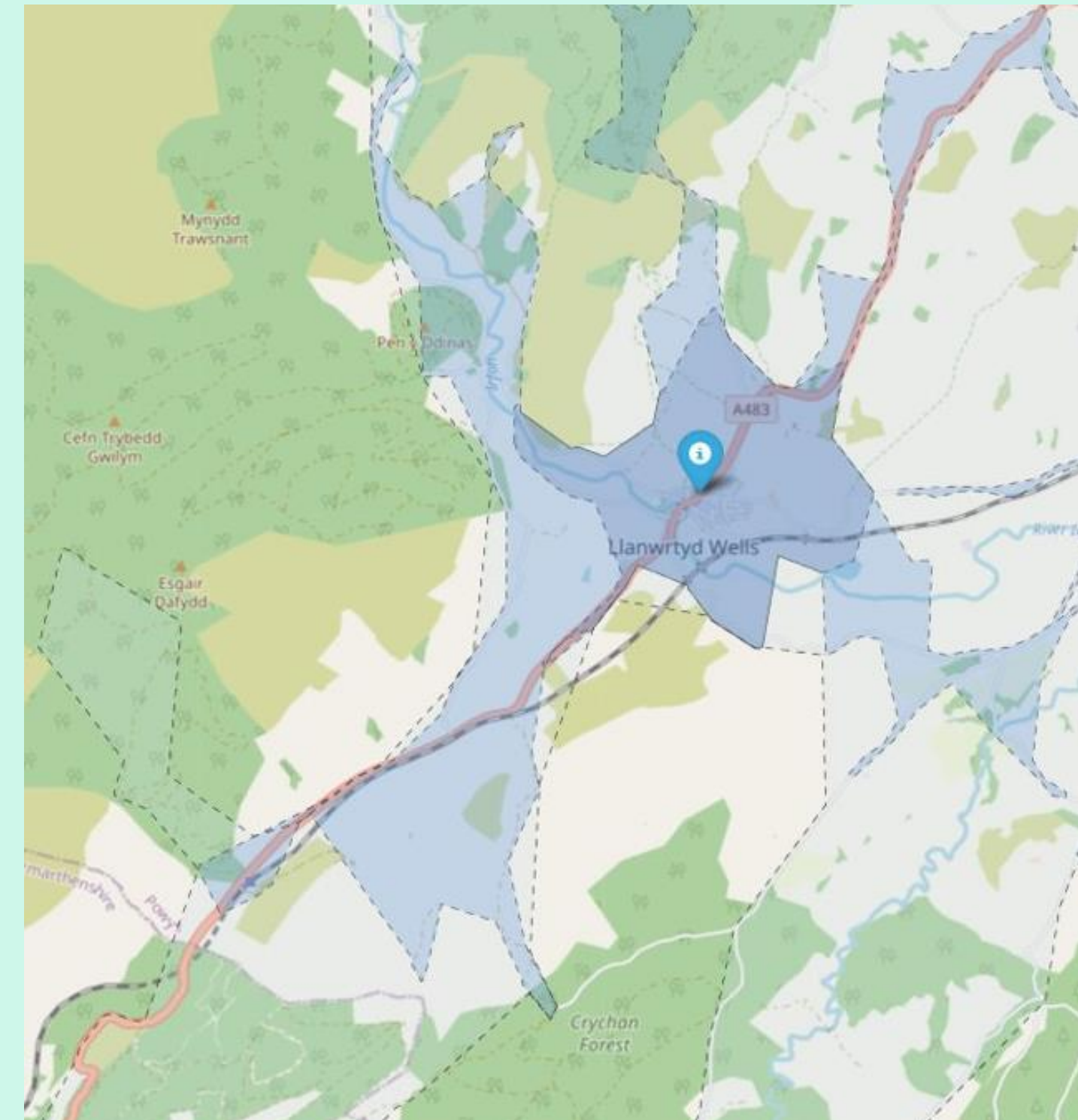


Min Distance Zone $i = 300\text{m}$

$$D_{1j} = \min(D_1^{ATM}, D_1^{Br}, D_1^{PO})$$

$$D_{2j} = \min(D_2^{ATM}, D_2^{Br}, D_2^{PO})$$

$$I_j = D_{2j} - D_{1j}$$

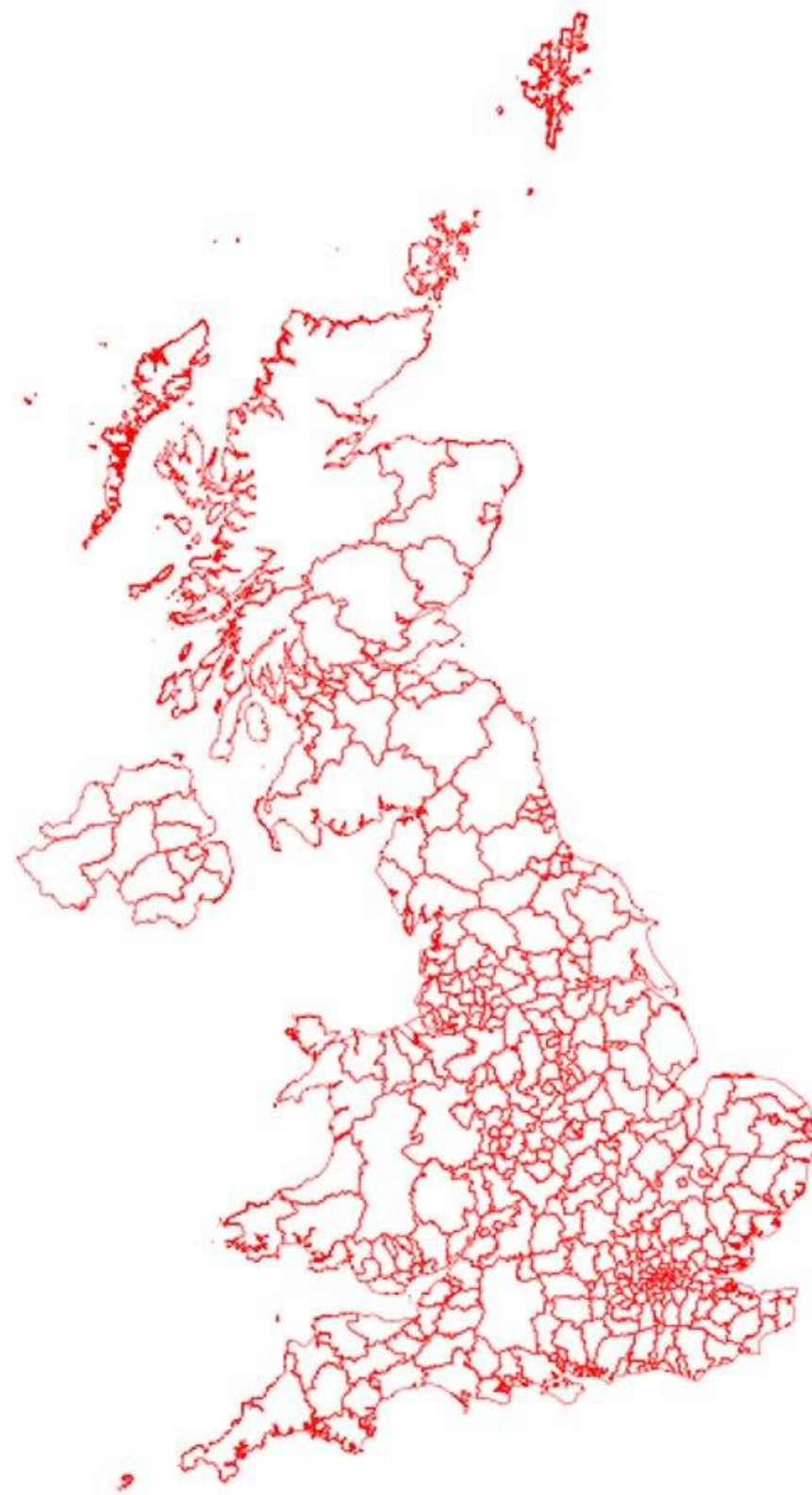


- using the road structure of UK (openstreetmap)
- differentiating by means of transport (foot, car)
- measuring time or distance
- thresholds
 - Time: 5/10/20 mins
 - Distance: 1/3/6 miles

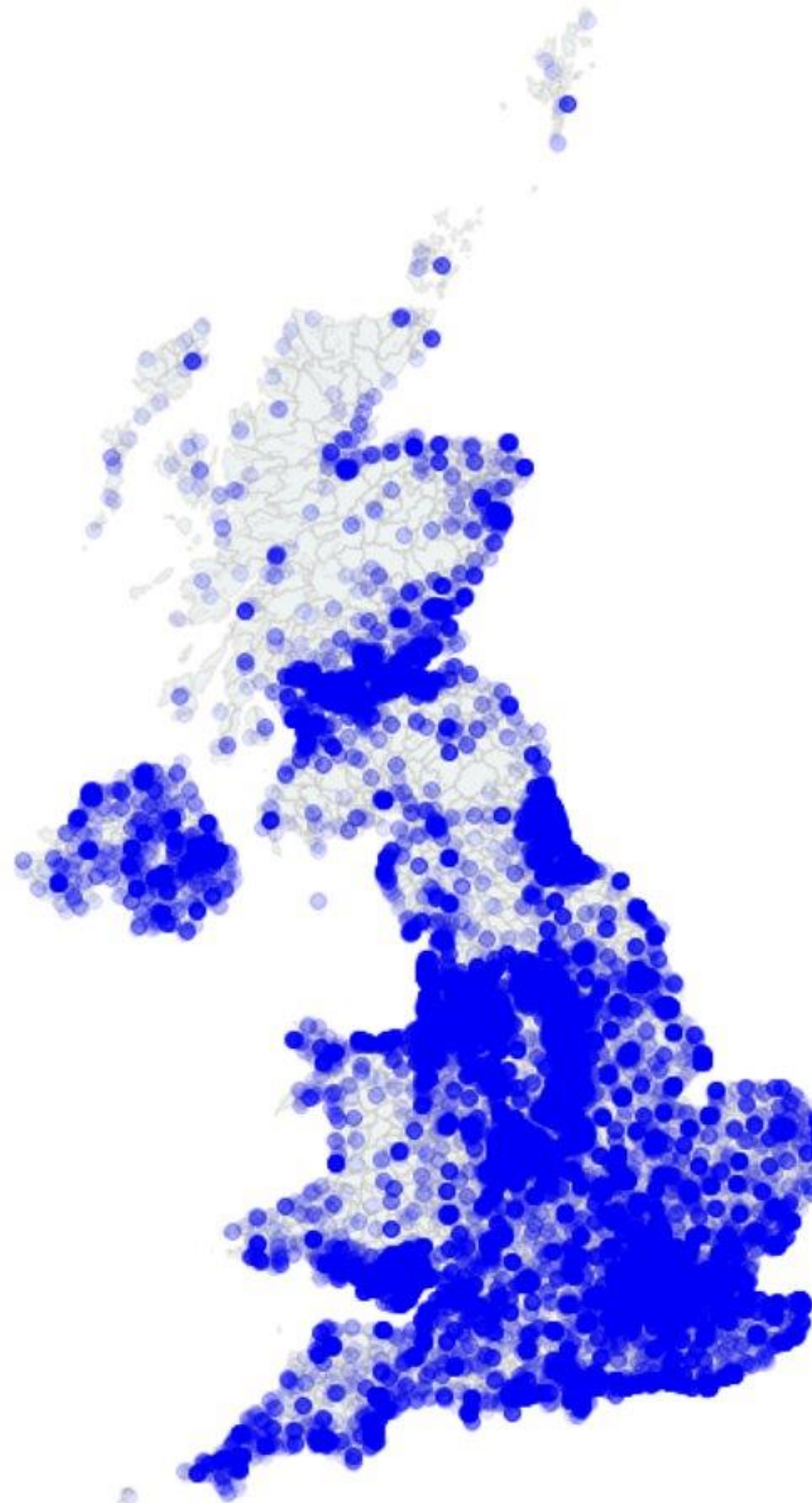
What we know

Building the dataset

Statistical areas



Points of access

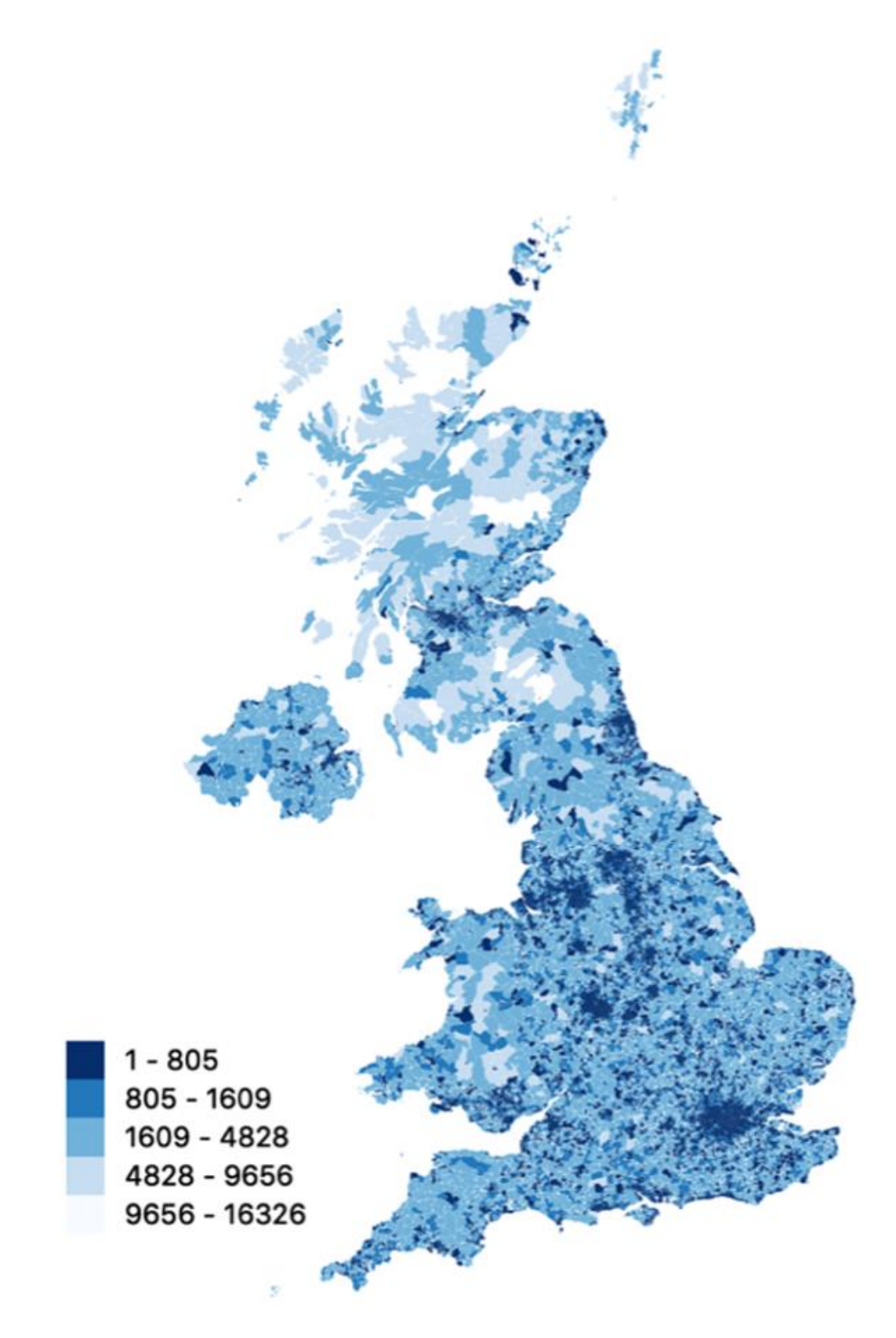


Broadband quality

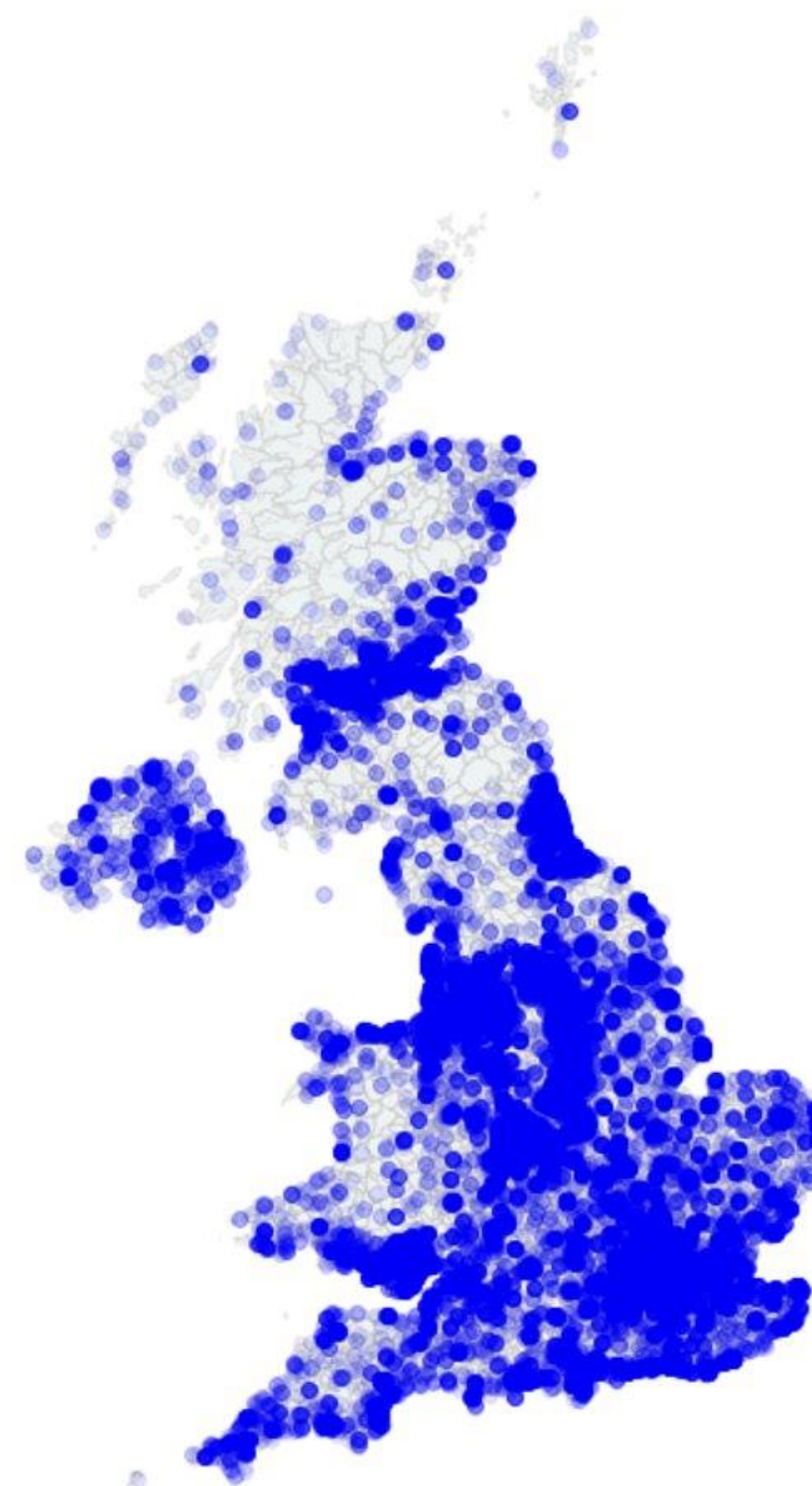


Distance 1 and Distance 2

Distance 1



Distance 2

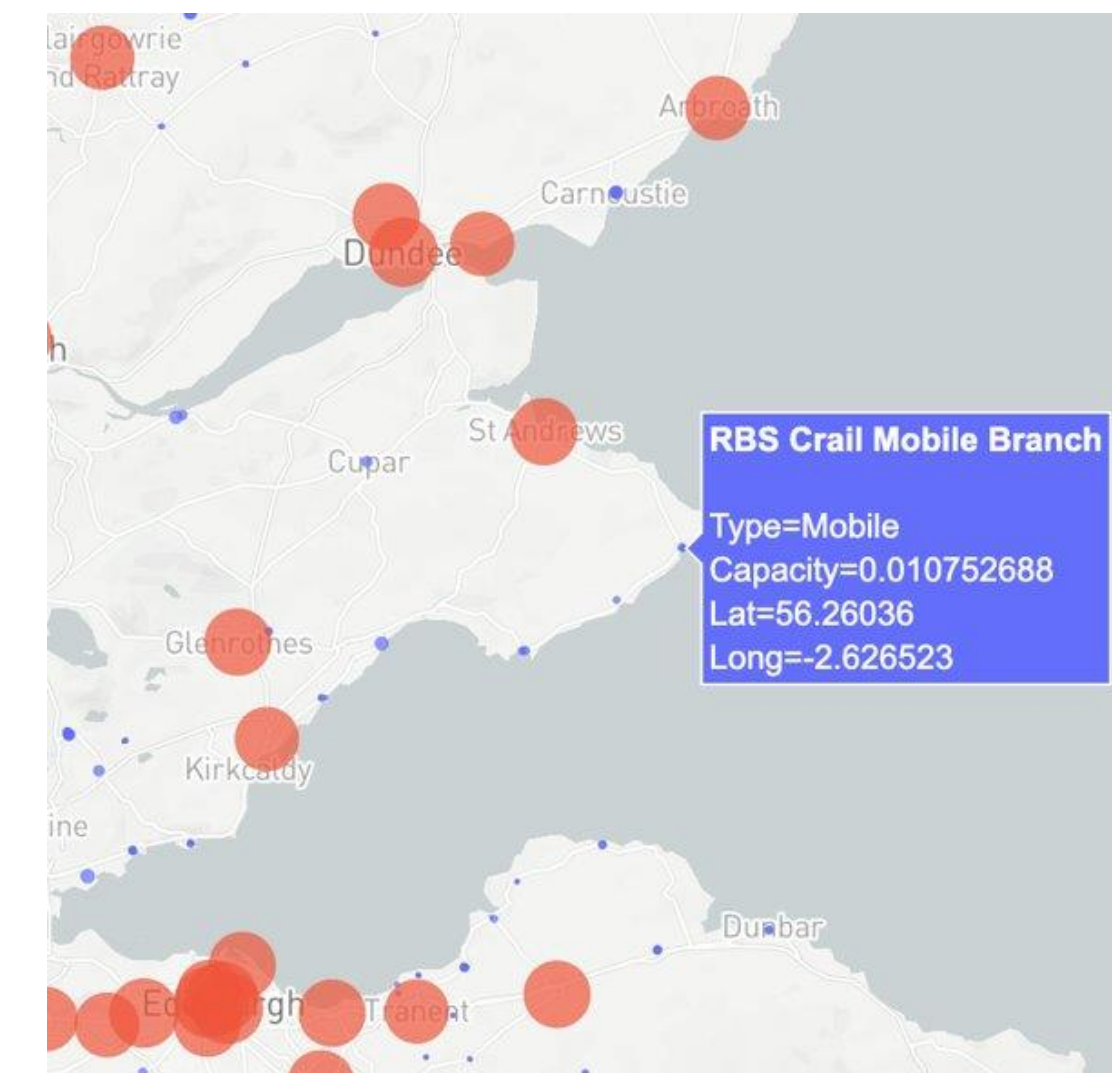
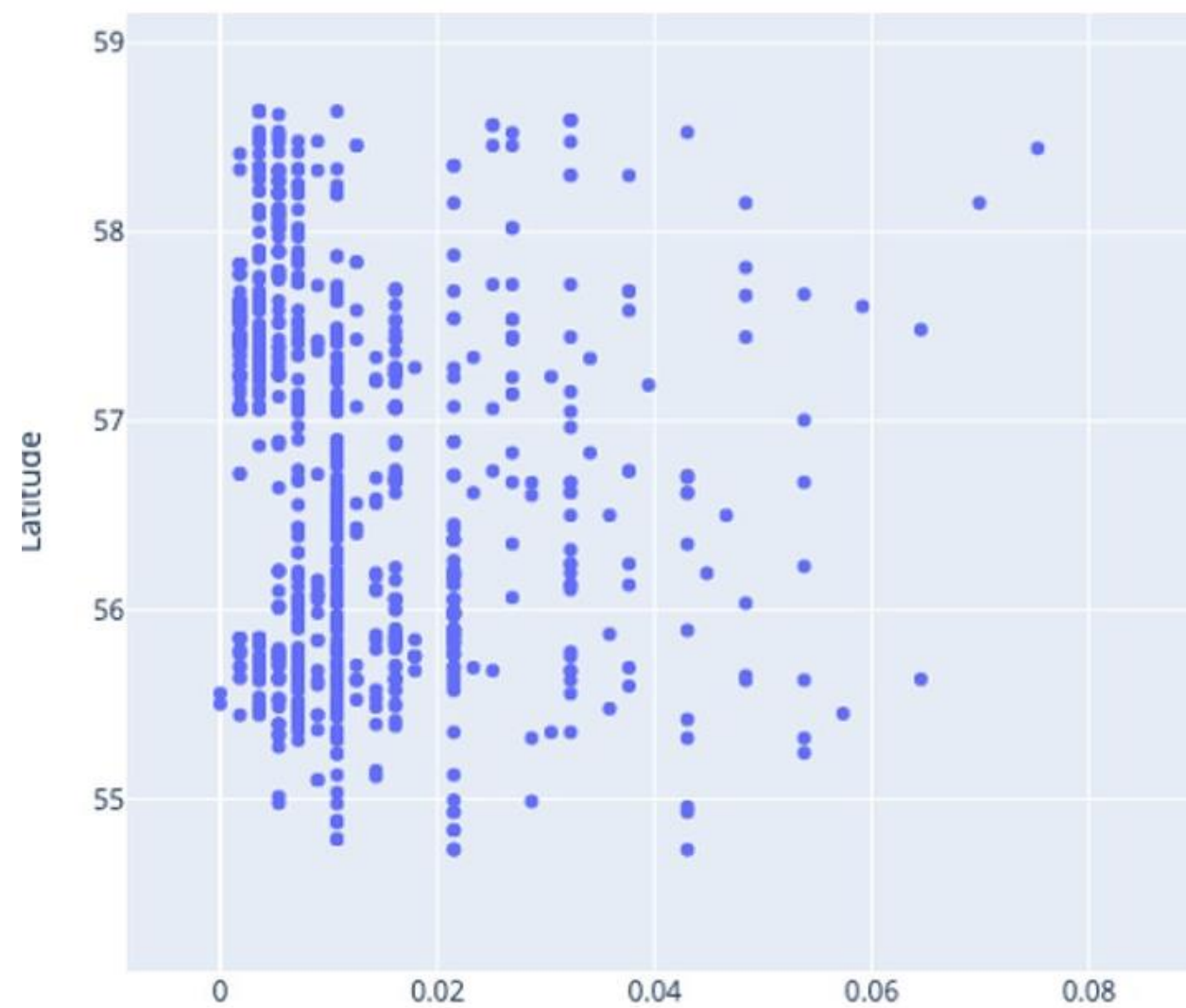
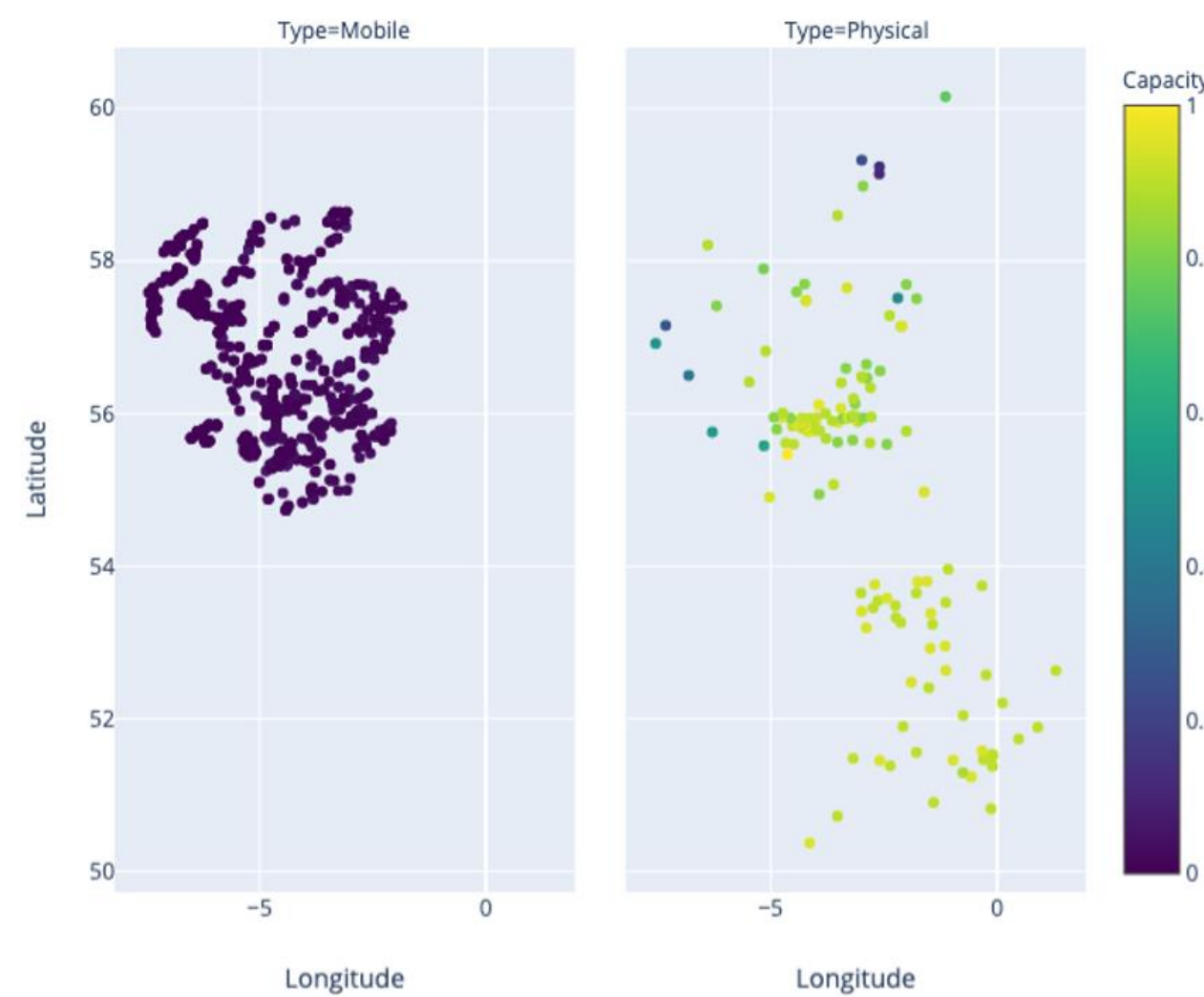


$$D_{2j} = \min(D_2^{ATM}, D_2^{Br}, D_2^{PO})$$

$$D_{2j} = \min(D_2^{ATM}, D_2^{Br}, D_2^{PO})$$

Capacity of a point

Capacity of 1 = 46.5h = 2790 mins

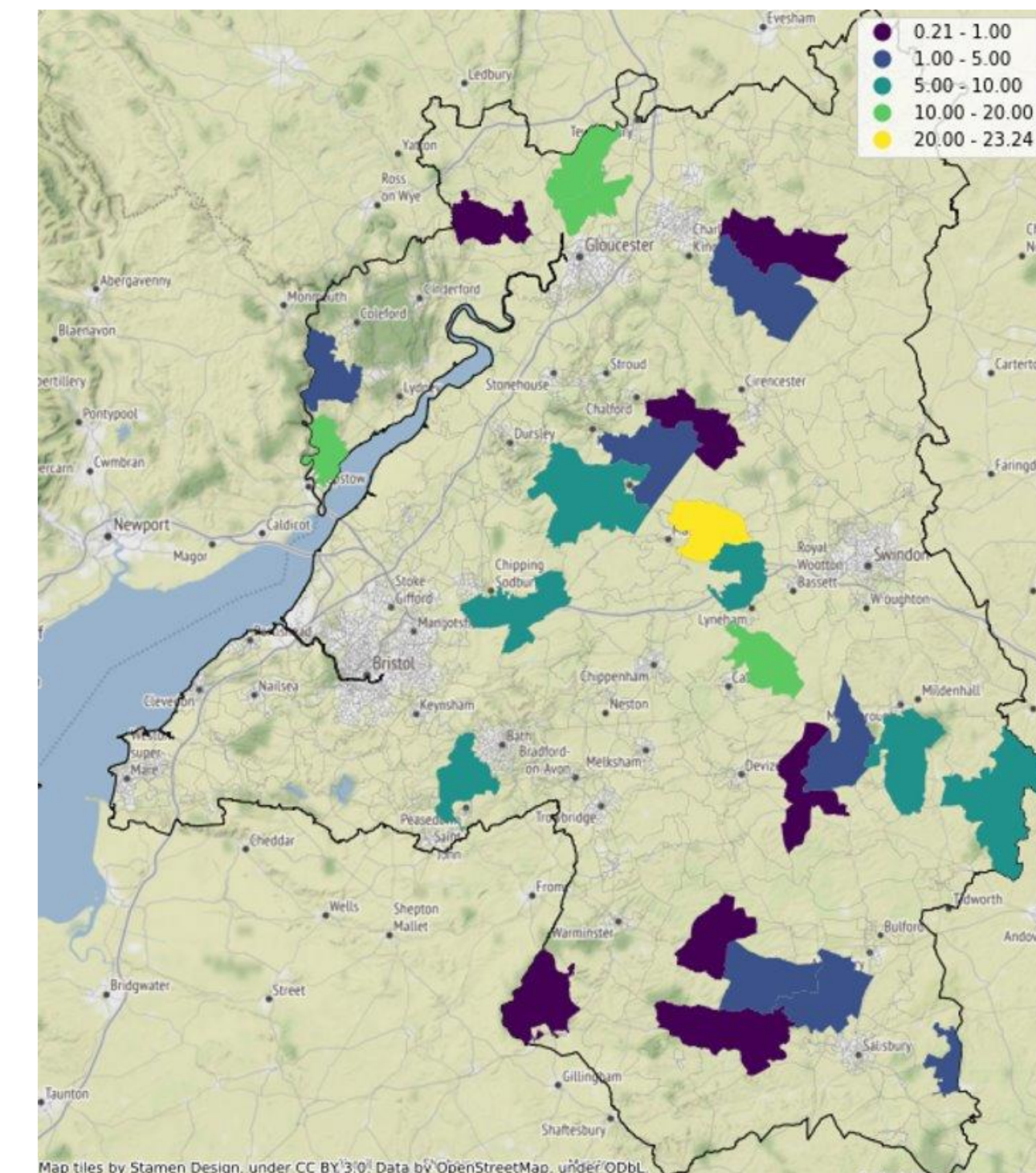


https://andrasonea.github.io/RBS_July2019_zoomable.html

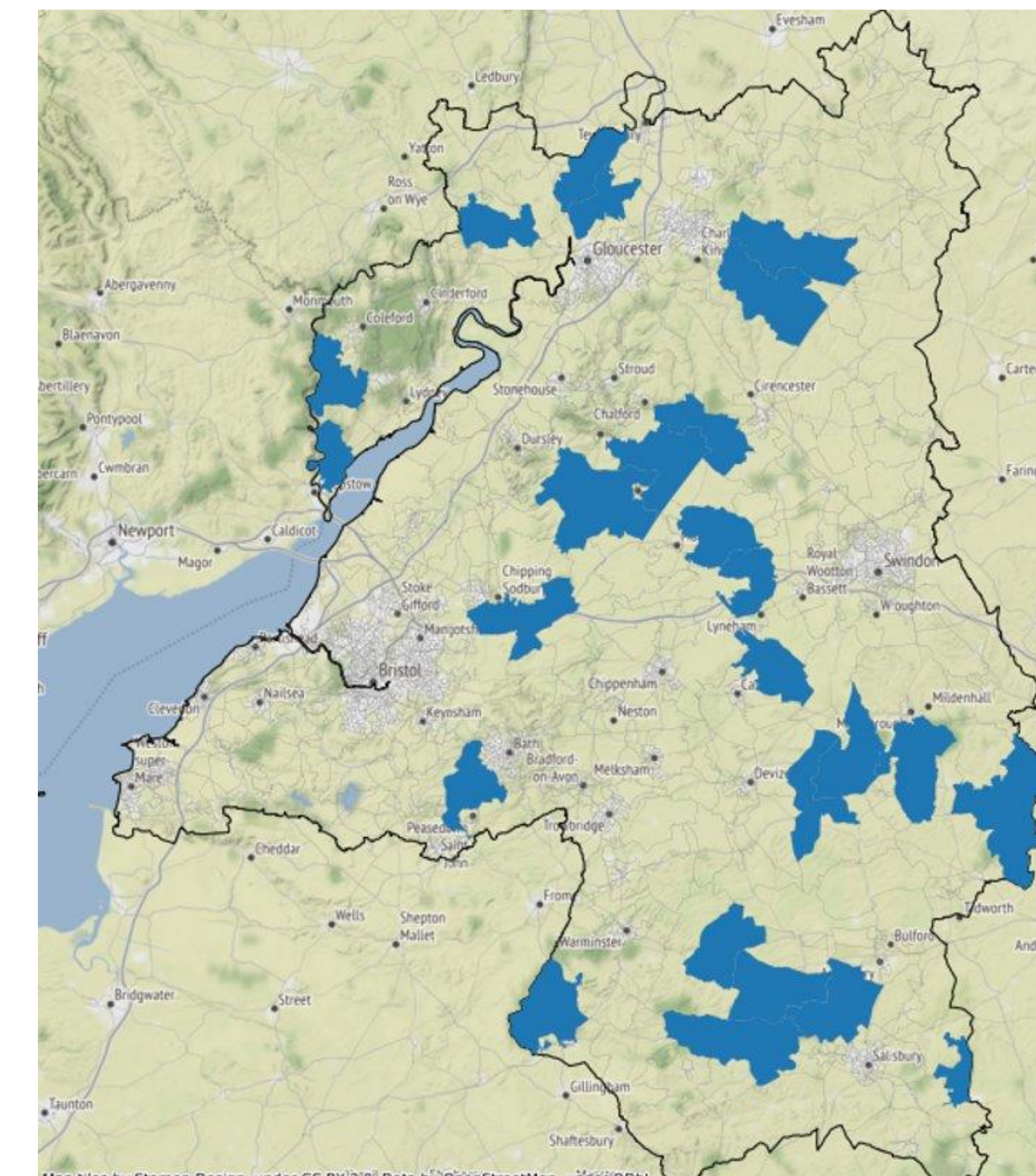
The Void

Gloucestershire, Wiltshire, and Bristol/Bath areas (NUTS2 : UKK1), Feb 2019

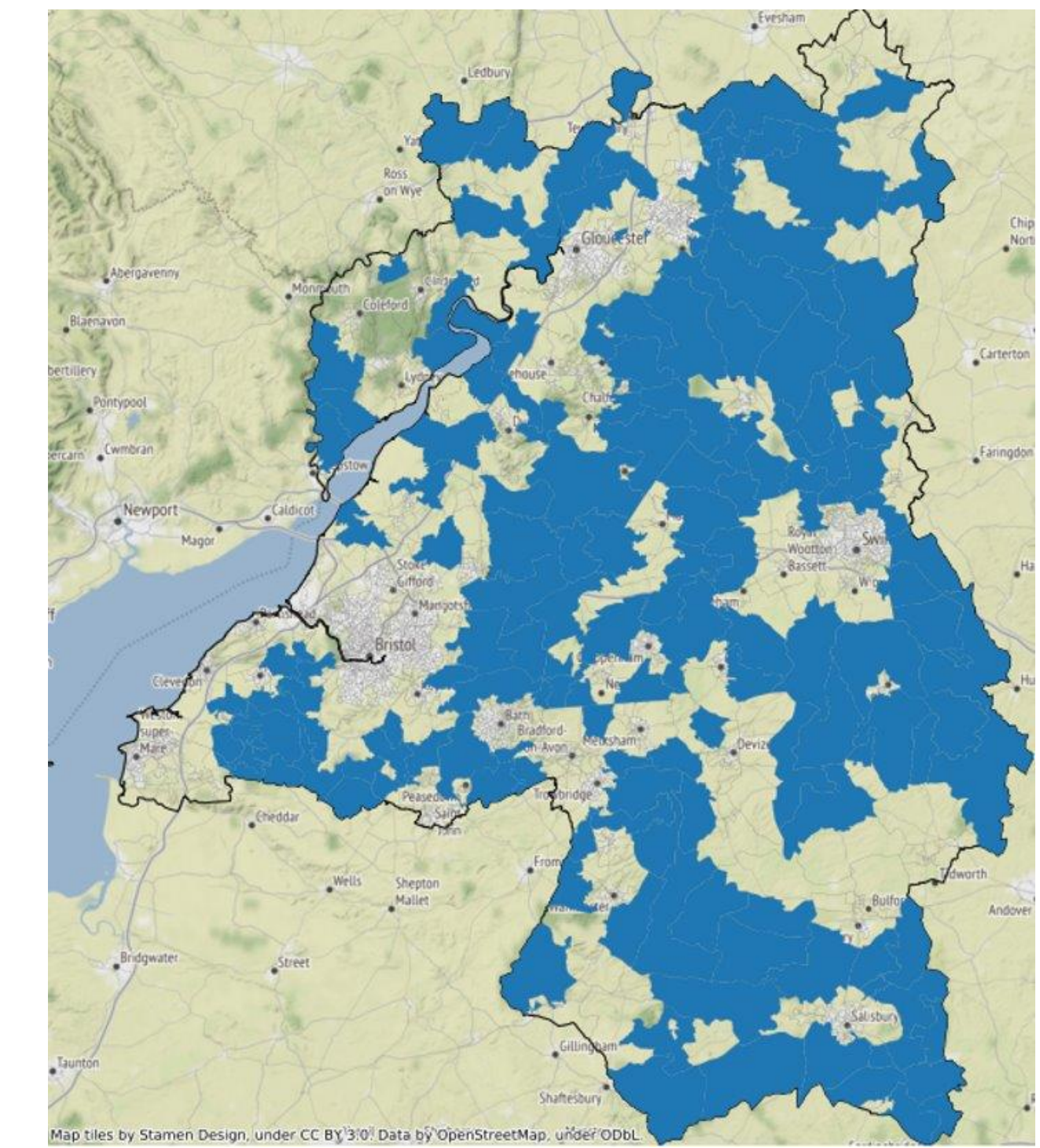
D1 > 3000m and a % of the premises cannot get fixed broadband over 2Mbps (2017).

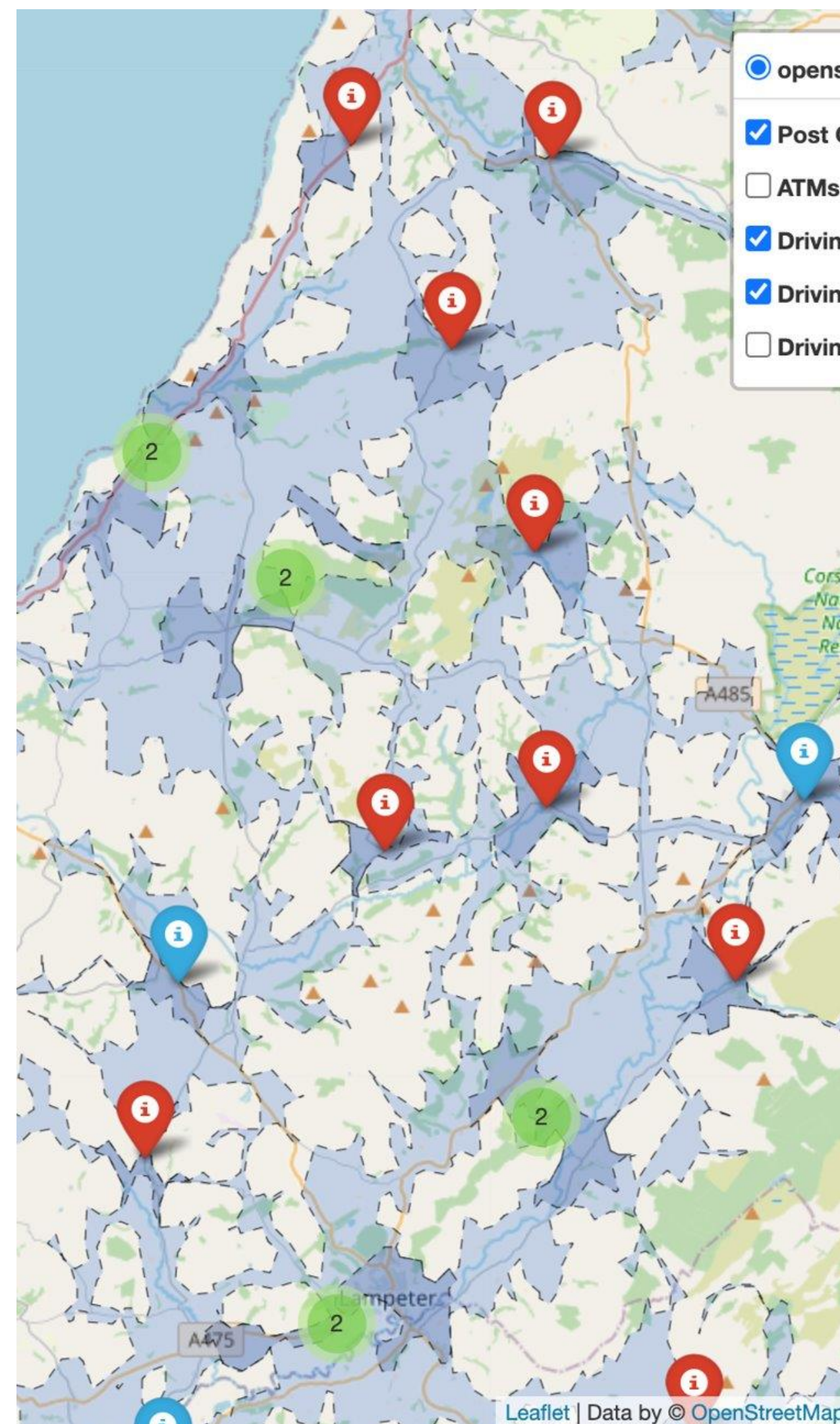
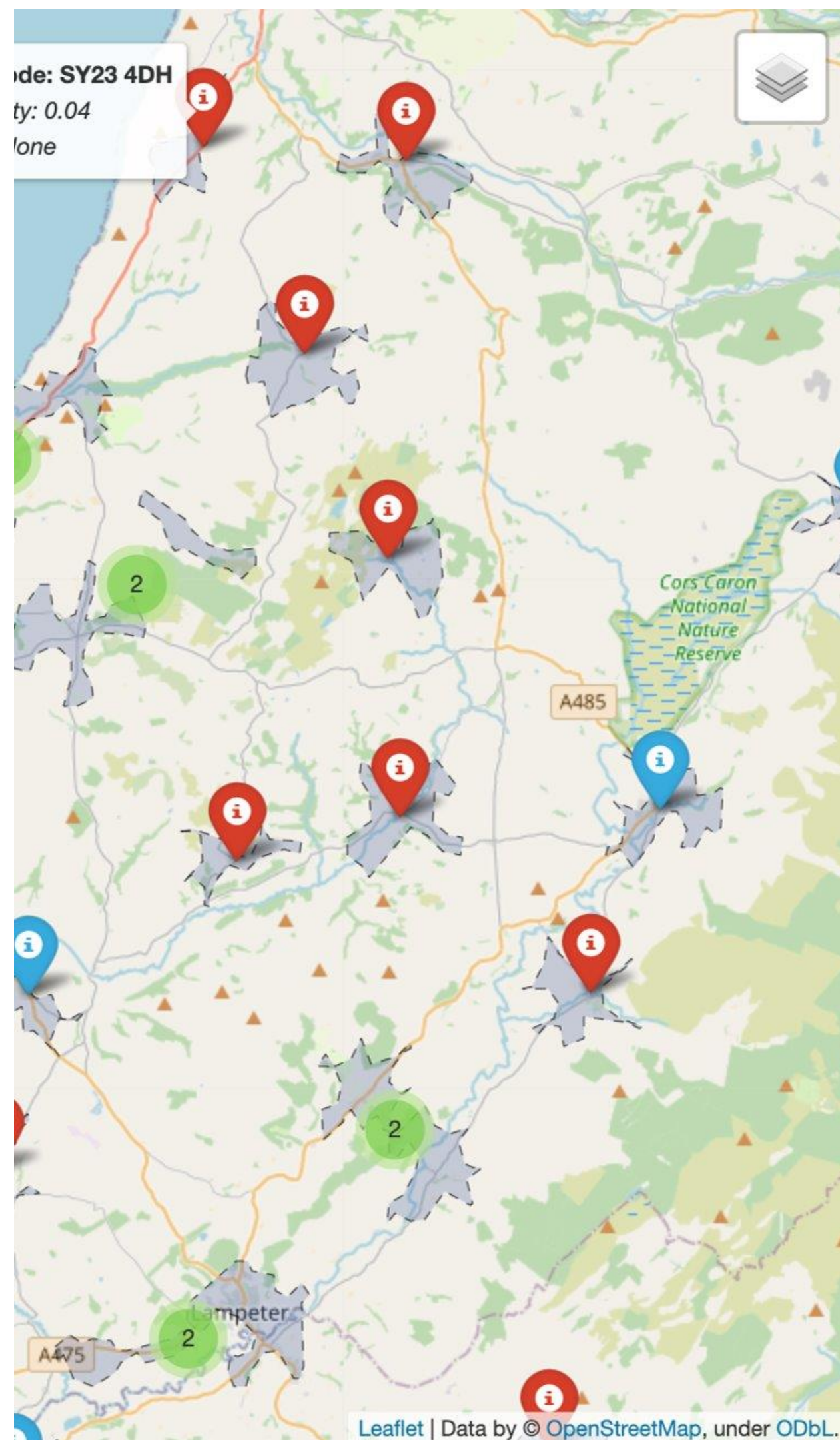


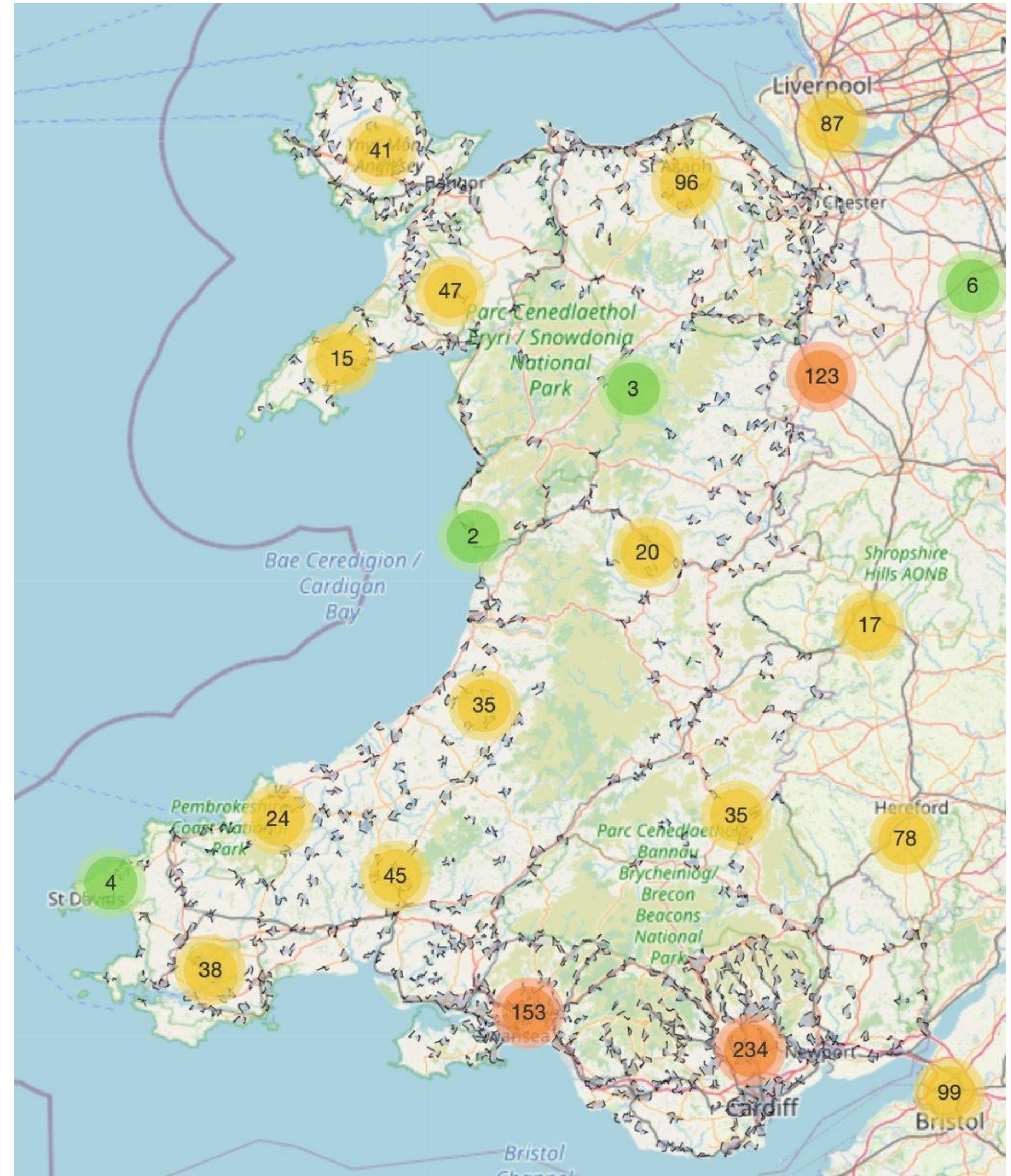
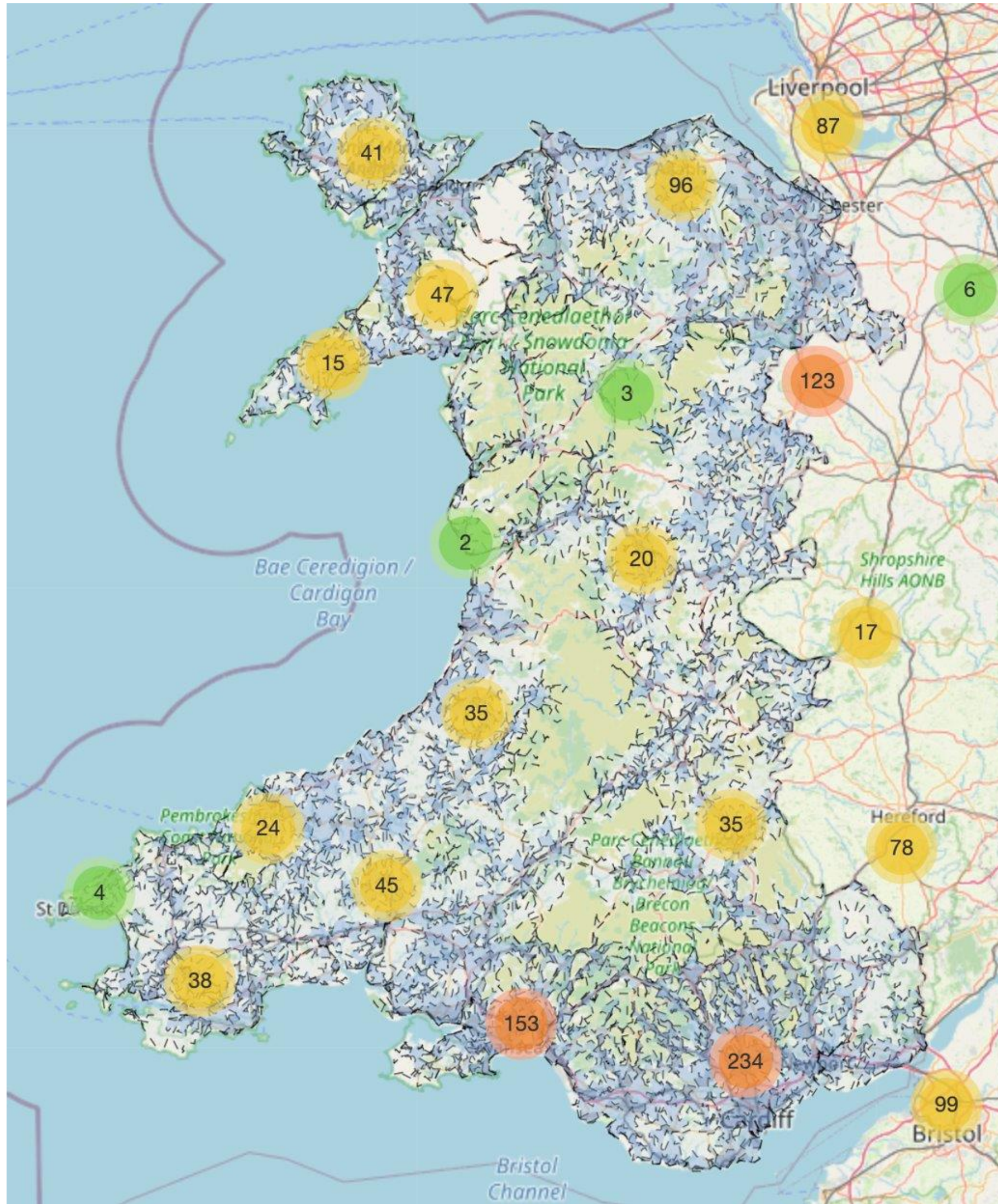
D1 > 3000m and Internet User Classification of the area is “Constrained by Infrastructure”.



"The Branches Void" – D1 branch > 3000m and Internet User Classification of the area is “Constrained by Infrastructure”.







Access all the recordings from
FintechOS Leap 2021 at:
<https://leap.fintechos.com/>

Ready to find out more? We'd love to hear from you:
hello@fintechos.com