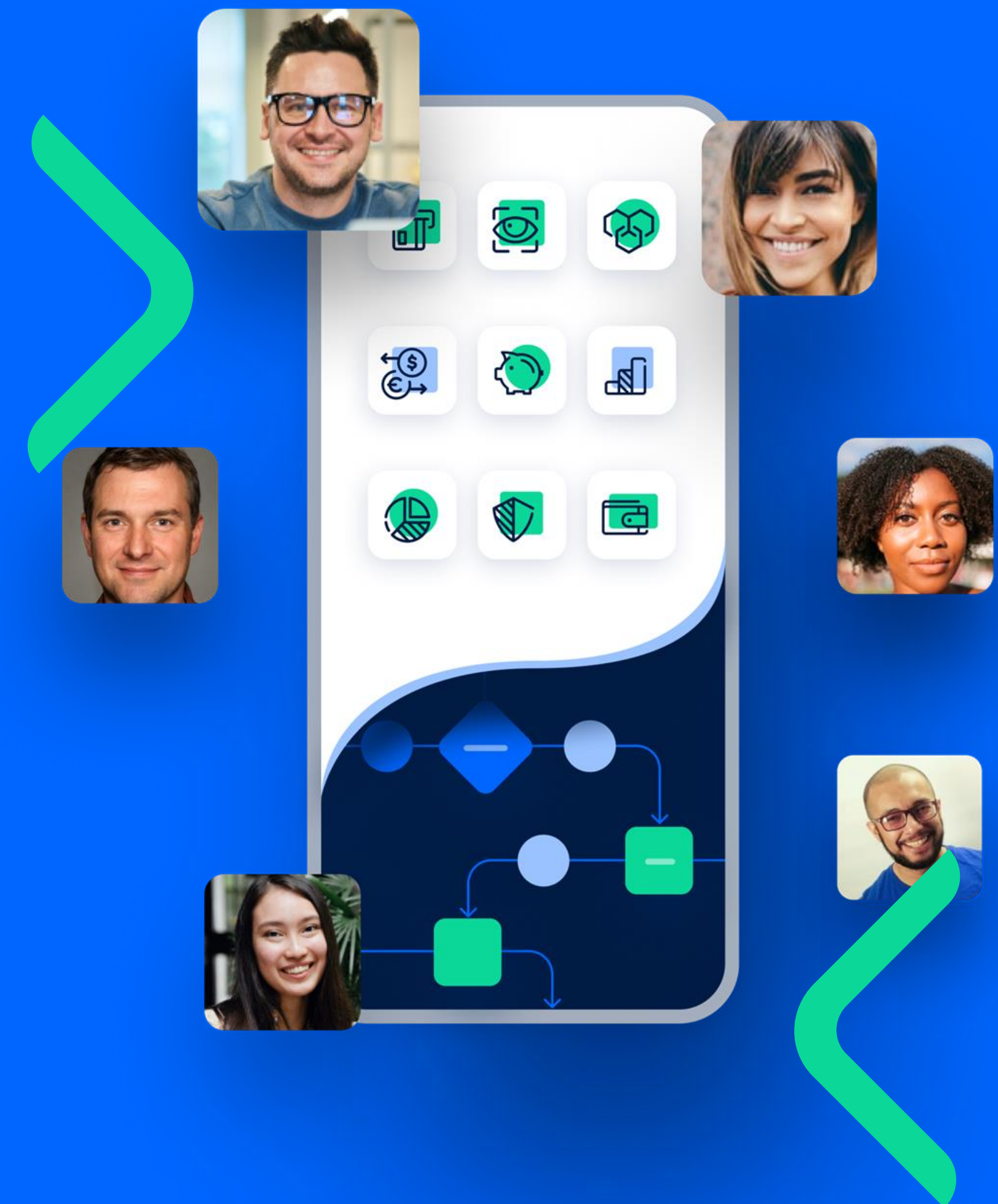




Insurance Product Factory

Technical enablement session

Spring Release - R2 2022



Insurance Product Factory

Insurance Product Factory enables insurance companies to effectively manage and grow their insurance product portfolios from a single comprehensive digital solution.

The technical solution supports all the business processes, allowing users to benefit from innovative solutions



Digital Solution Overview

Digital assets included in the solution

Data Model

Highlight important entities

SDK

Important coding aspects

APIs

How to consume the product

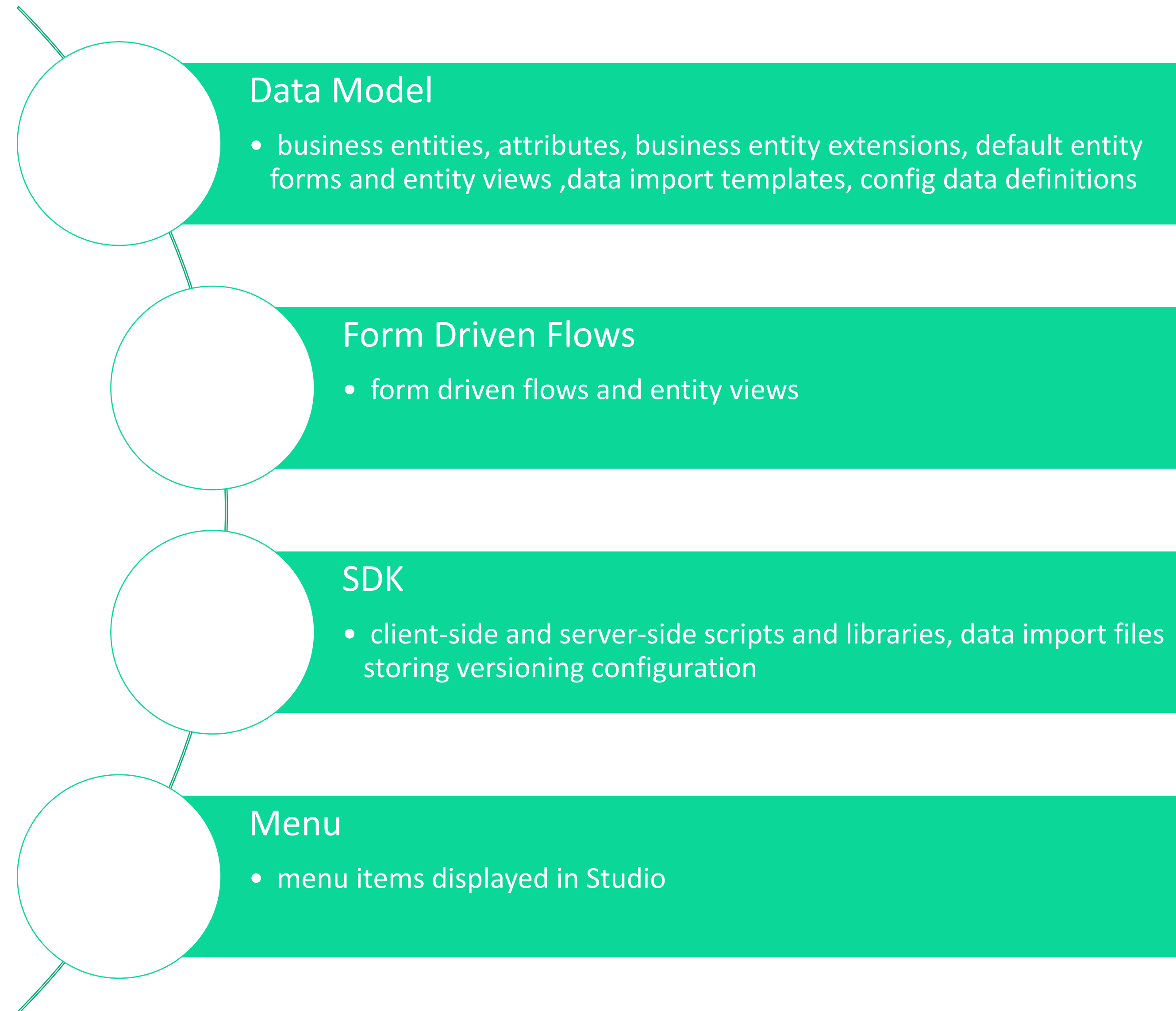
Digital solution overview

Digital solution packages

IPF digital solution package

Insurance Product Factory digital solution package includes four digital assets.

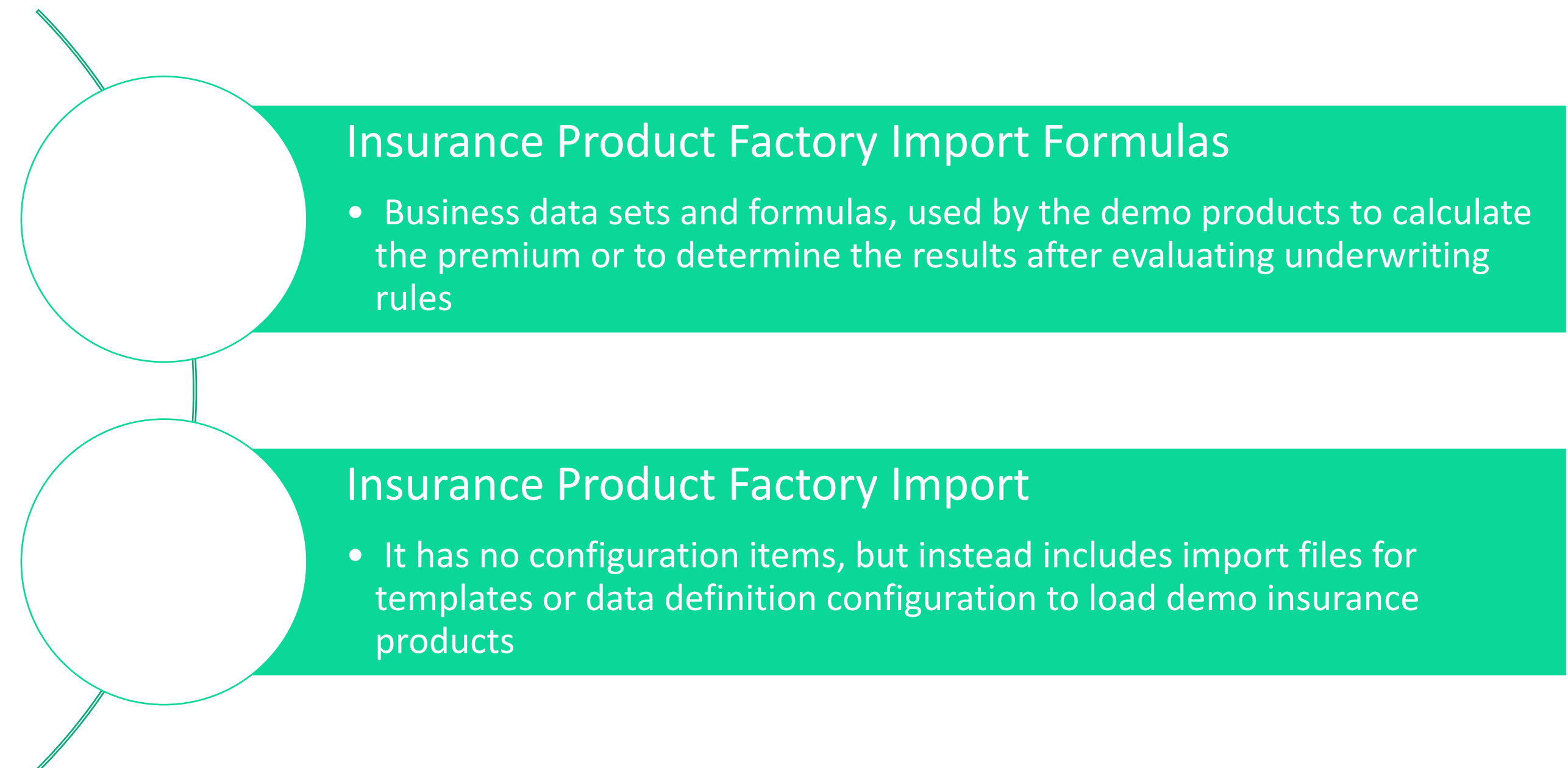
After installing it, you will be able to administer your insurance products, covering functionalities like: create a new product, create a new version of a product, clone an existing product, attach premium calculation or underwriting formulas, define lines of business.



Digital solution packages

IPF import formulas and IPF import digital solution packages

Insurance Product Factory Import Formulas and Import digital solution packages allow you to import fully configured demo insurance products. These solution packages are **optional**, and each of them includes one digital asset, with the same name and the solution package.



Data Model

Lines of business



The configuration of lines of businesses is possible using the new entities that were included in the data model:

FTOS_IP_ClassOfBusiness,
FTOS_IP_CategoryOfBusiness,
FTOS_IP_LineOfBusiness,
FTOS_IP_LineOfBusinessSubtype

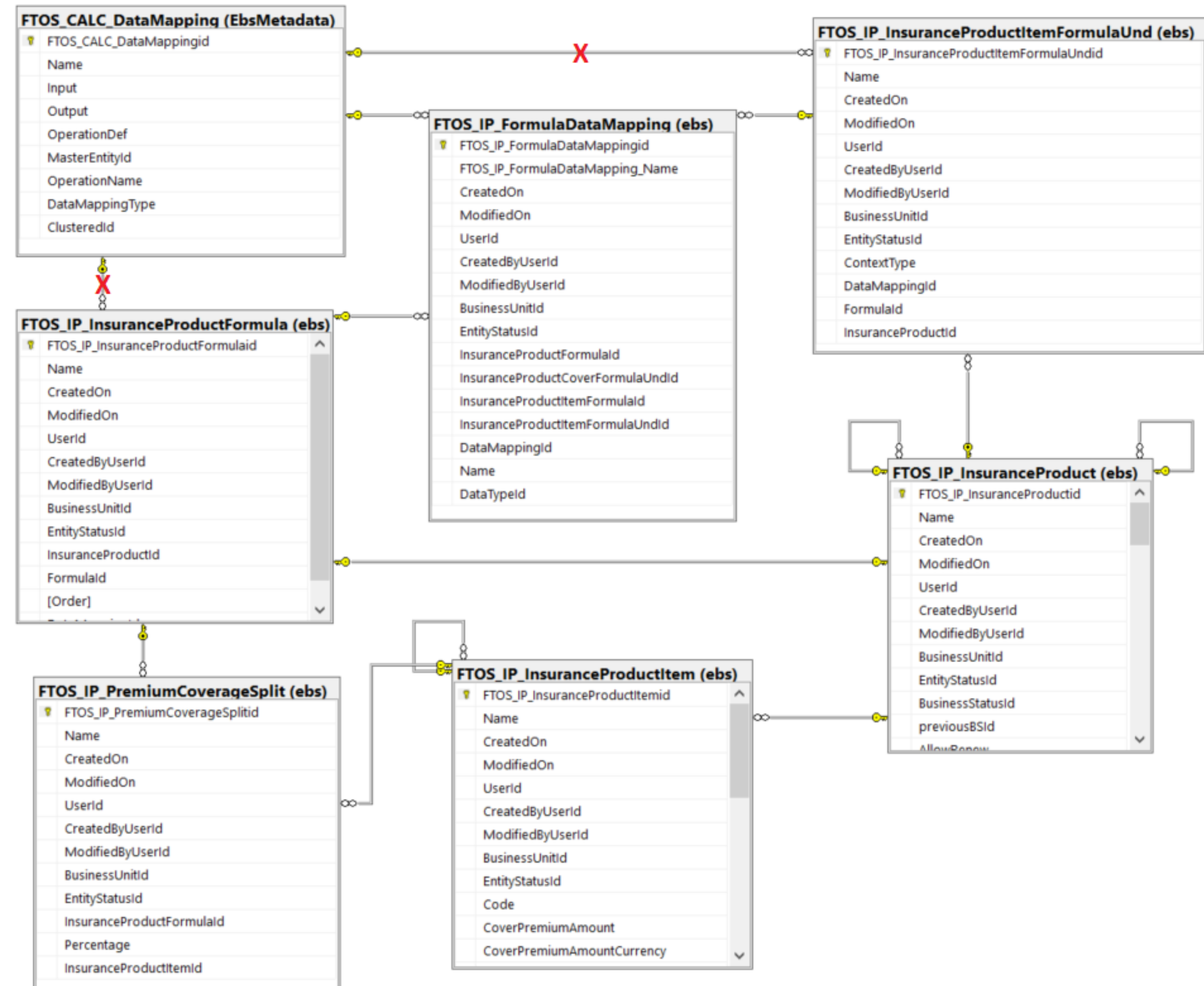


Pricing & UW

Top down

NEW

- **Pricing** and underwriting formulas attached on **product** level
- Split the total premium amount of the product on coverages
- Add 2 different types of mappings for each type of formula, with possibility to extend to multiple mapping types in the future

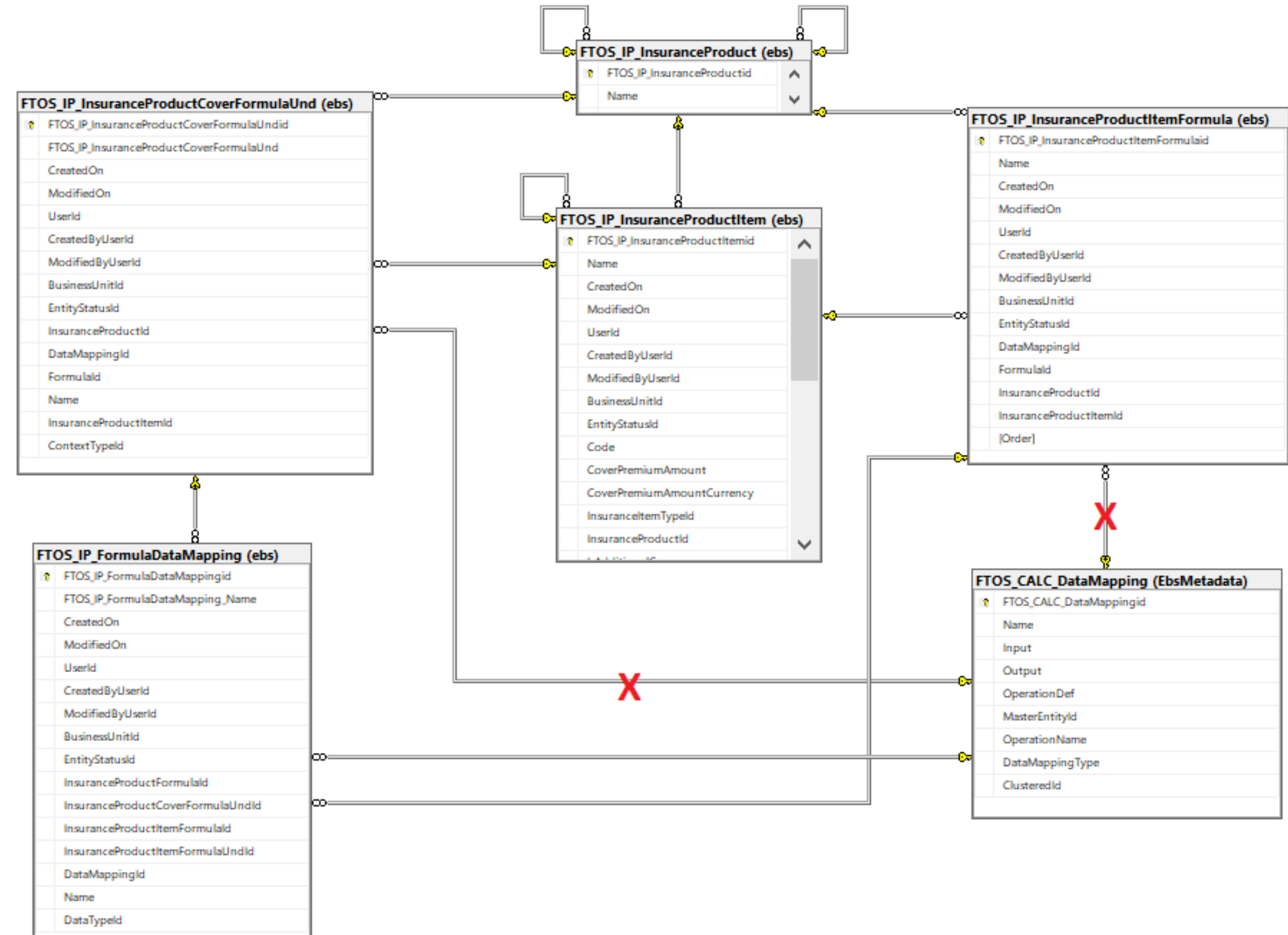


Pricing & UW

Bottom up



- Pricing and **underwriting** attached on **coverage** level
- Pricing aggregated at product level to get the total premium amount for the product
- Add 2 different types of mappings for each type of formula, with possibility to extend to multiple mapping types in the future



SDK

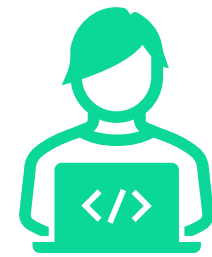
OS

Product Factory SDK

Main changes



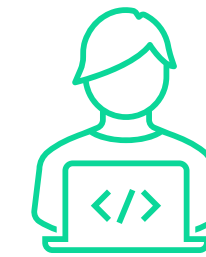
Refactoring endpoints exposed as APIs



Server-side validation on new entities part of the data model



Server-side scripts to improve the experience of first time import of the product, using excel files



Refactoring client side and server-side scripts



New client-side and server-side script **libraries** to support new features implemented

Use cases

- Improvements for a first time import of a product, using data import templates and excel files: server-side script FTOS_IP_InsuranceProductItem_BeforeCreate
- Server-side automation script library storing functions used by the APIs: FTOS_IP_InsuranceProductAPIs

APIs



Insurance product factory APIs

FTOS_IP_GetProductFormulasStructuresAPI

Use this API to get the keys expected by the formulas attached on coverages (product items) or on product.

The API will return information about all the formulas attached on the coverages of the products or formula attached on product level and all the structures for underwriting formulas attached on product level or on coverage level, for each context type.

For more details check Get Formula Structure confluence [page](#)

FTOS_IP_PremiumAmountAPI

Use this API to calculate the premium for each coverage (product item) and total premium amount of an insurance product. For each product item or product, the input keys expected by formula engine are required.

In order to get the premium calculation, the endpoint calls the formulas attached on each item included in the request and identified by its code or calls the formula attached on product level

For more details check Get Premium Amount [page](#)

FTOS_IP_GetUWRulesResultAPI

Use this API to run underwriting formulas attached on product level or on coverage level.

In order to use the API, the request needs to include all the keys expected by formula engine, for each context type.

For more details check Get UW Rules Results confluence [page](#)



Product Interrogations History

storing all the requests coming from different solutions or systems

Got questions? Remarks? Feedback?



Talk to me 😊

Talk to Cristina Coseriu

Cristina.coseriu@fintechos.com

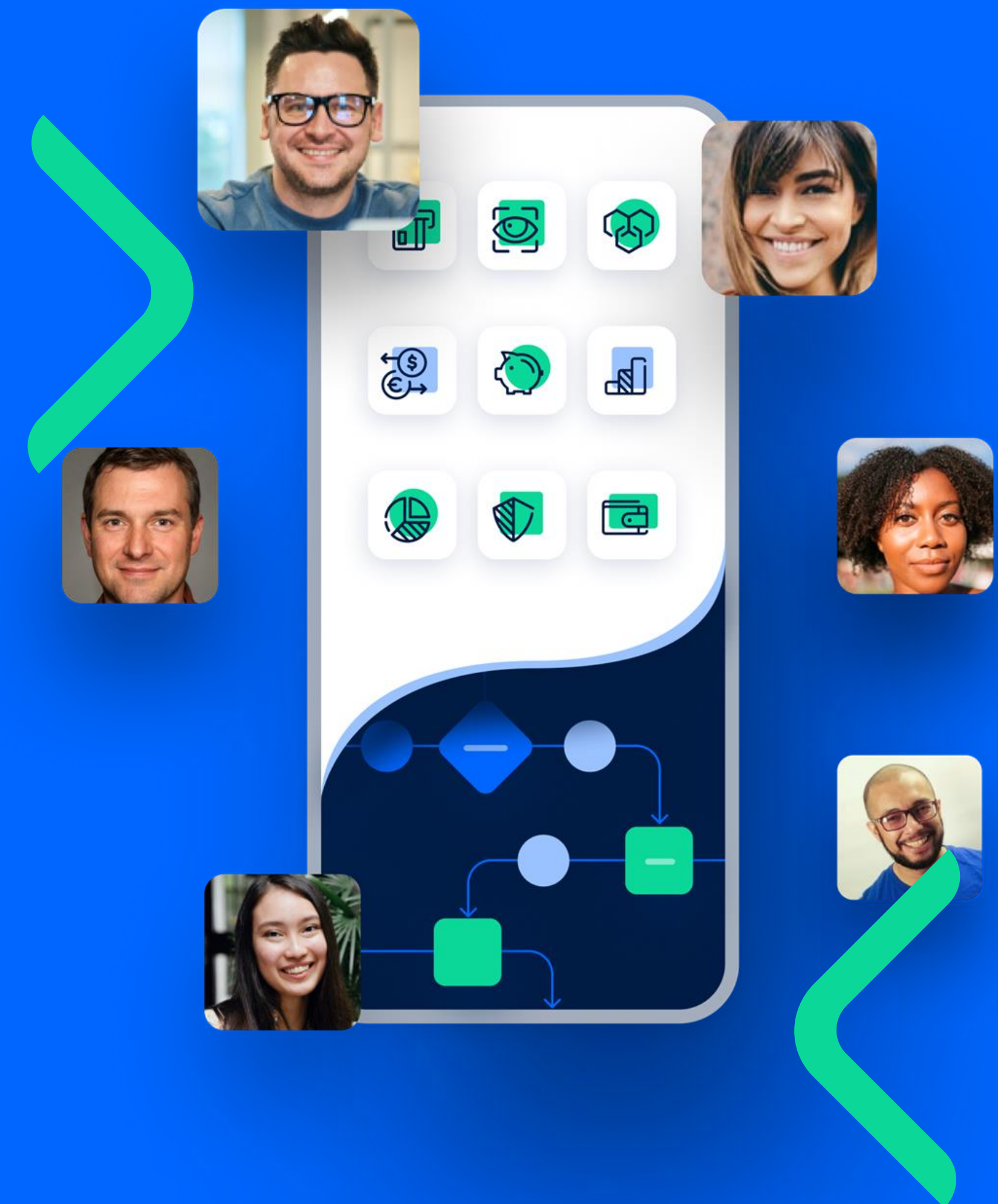
(Or message me on teams)



Proposal Configurator

Technical enablement session

Spring Release - R2 2022



Proposal Configurator

The key capability of Proposal Configurator is the ability to configure product offerings in logical bundles

The technical solution supports all the business processes, allowing users to benefit from innovative solutions.



Digital Solution Overview

Digital assets included in the solution

Data Model

Highlight important entities

SDK

Important coding aspects

APIs

Interaction with proposal configurator

Digital solution overview

Digital solution packages

Proposal Configurator

Proposal Configurator digital solution package contains a list of customization items defining the data model of the solution, together with data import templates to populate the entities. It includes elements part of the SDK of the solution as well.

Proposal Configurator Import

Proposal Configurator Import digital solution package contains a set of predefined configuration created on top of the household product.

Since the defined insurance personas are using audiences to evaluate quote property attribute values, installing Quote Property solution package prior to Proposal Configurator Import solution package is mandatory.

Data Model

Proposal Configurator



- New insurance persona type – formula engine
- Business workflow and versioning process on card level
- Working with 2 types of cards: single product vs multi product
- Defining card dimensions
- Map sum insured or excess on card item or card dimensions

Proposal Configurator Solution
Data Model [documentation](#).

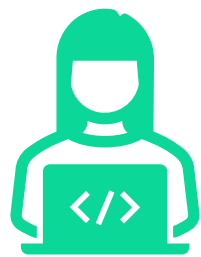


SDK

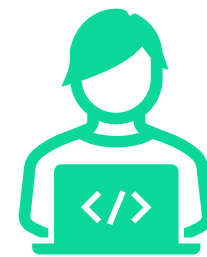
OS

Proposal Configurator SDK

Main changes



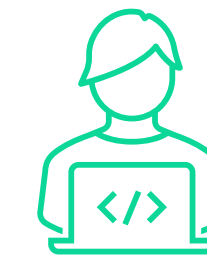
New client-side or server-side scripting



Improvements on existing libraries



Support for working with insurance personas evaluated based on formula engine



UI improvements



New proposal configurator API

Use case

- Card item/card dimensions

Key	Value	Key Type	Key Sub-type
<input type="text"/>	<input type="text"/>	<input type="text" value="(All)"/>	<input type="text" value="(All)"/>
usageType			
insuredAmount	500000	Sum Insured	
frequency			
coverage			
constructionYear			
buildingType			
resistanceStructure			

APIs



Proposal Configurator API



FTOS_IP_ProposalConfigPremiumCalculation

This API was designed to allow the interaction with Proposal Configurator solution, returning details about the available cards and their premiums , based on the responses provided to the DNT questions.

The current versions of the API can be used in the quotation process, to get the premium amount for each card, using the latest settings created for a specific quote config.

For more details check Proposal Configurator [page](#)

In order to get fast responses using the API, all the quote config details are stored in a JSON object in the **configJSON** attribute from **FTOS_IP_QuoteConfig** entity. Every time a change occurs on the available configurations, this attribute is updated (for example when adding/removing a new insurance persona on card config, adding/removing card from insurance personas, approving new versions of the cards).

Got questions? Remarks? Feedback?



Talk to me 😊

Talk to Cristina Coseriu

Cristina.coseriu@fintechos.com

(Or message me on teams)

Thank you!